

Introduction



Our second wholly-owned factory in Cambodia (Chia Ho Industrial Park) currently is under construction, it schedule to be start operating at the end of 2023. We expect to have around 1000 workers.



Uni-SAF

Work wear | Race wear | Fabric

LOCATION OF CHIAHO INDUSTRIAL PARK (The Second Factory)

FROM CHIAHO INDUSTRIAL PARK

→ Port of Phnom Penh : 30min (20km)

→ Port of kampot : 2h30min (130km)

→ Port of Sihanoukville : 3h30min (189km)



Uni-SAF
Work wear | Race wear | Fabric

Summary of factory



100% Ownership

China Plant , Cambodia 1st Plant , Cambodia 2nd Plant.
(currently under construction)



Joint venture

Myanma Factory



2060 Employees

60 staffs in China , 700 staffs in Cambodia, 1300 staffs in Myanma



Products

Workwear, Racing wear, Forest protection wear, Denim, knit ,
Cotton-padded clothing , Down clothing, Waterproof clothing



Major trade country

Japan, Europe, America

MOQ

Cambodia/ Myanmar : 5000 PCS
China : 1000 PCS

Certification



Uni-SAF
Work wear | Race wear | Fabric

Factory inspection and Certification (Cambodia Factory)

Monitoring result for CHIA HO (CAMBODIA) GARMENT INDUSTRIAL CO., LTD. on site CHIA HO (CAMBODIA) GARMENT INDUSTRIAL CO., LTD.



Monitoring

Monitored Party	: CHIA HO (CAMBODIA) GARMENT INDUSTRIAL CO., LTD.	amfori ID	: 116-000115-000
Site	: CHIA HO (CAMBODIA) GARMENT INDUSTRIAL CO., LTD.	Site amfori ID	: 116-000115-002
Address	: National Road #51, Domnak Pring Village, Tomnabthom Commune, Ponghaslee District, N/A, Kandal, Cambodia	Monitoring Activity	: amfori Social Audit - Manufacturing
		Monitoring Type	: Full Monitoring
		Submission Date	: 30/07/2021
		Expiration Date	: 30/07/2022

This is an extract of the online monitoring result, generated on 03/08/2021, and is only valid as an acknowledgement of the result. To see all the details, review the full monitoring result, which is available [here](#) - The English version is the legally binding one.

amfori does not assume any liability with regard to the compliance of this extract, or any versions of this extract, with the Regulation (EU) 2016/679 (General Data Protection Regulation).
All rights reserved. No part of this publication may be reproduced, translated, stored in a retrieval system, or transmitted, in any form or by any means electronic, mechanical, photocopying, recording or otherwise, be sent, re-sold, hired out or otherwise circulated without the amfori consent. © amfori, 2021

Overall rating

A	B	C	D	E	Note
---	---	---	---	---	------

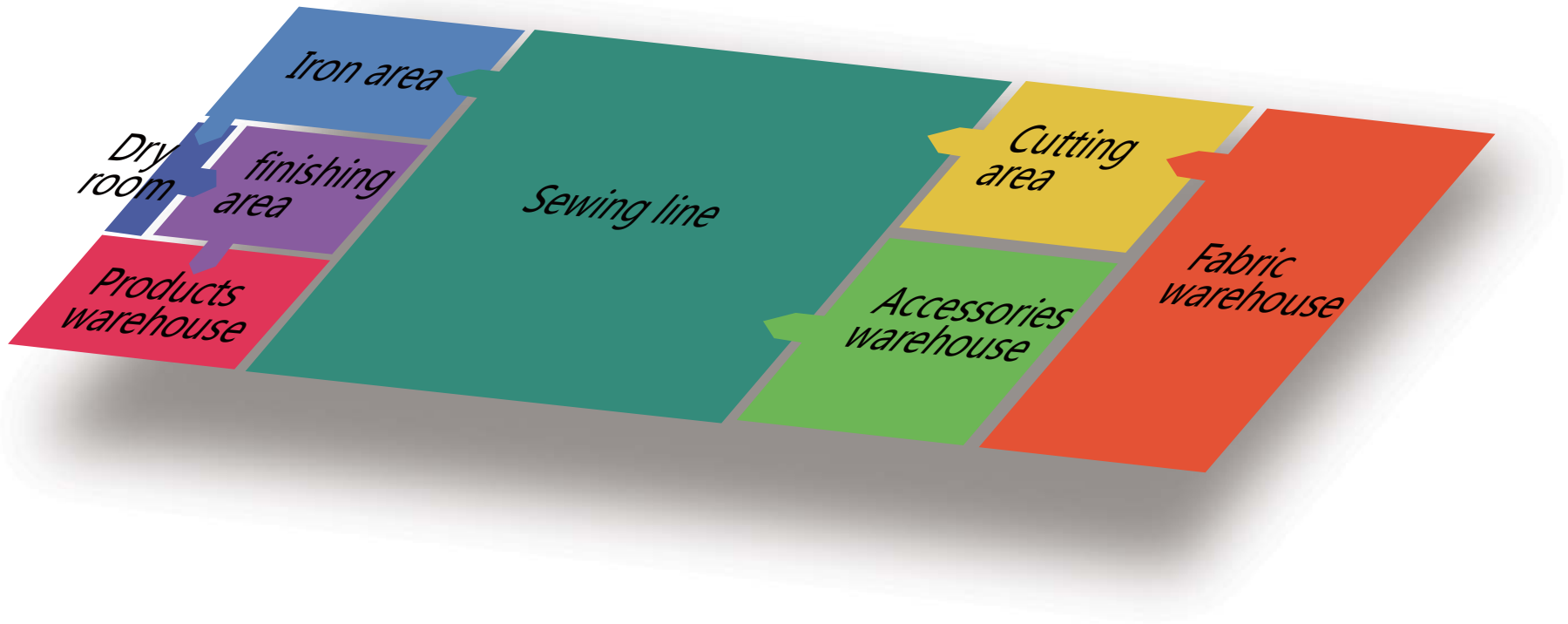
Section rating

PA1: Social Management System	D
PA 2: Workers Involvement and Protection	C
PA 3: The Rights of Freedom of Association and Collective Bargaining	A
PA 4: No Discrimination	B
PA 5: Fair Remuneration	B
PA 6: Decent Working Hours	A
PA 7: Occupational Health and Safety	B
PA 8: No Child Labour	A
PA 9: Special Protection for Young Workers	A
PA 10: No Precarious Employment	B
PA 11: No Bonded Labour	A



Uni-SAF
Work wear | Race wear | Fabric

Cambodia factory layout



Overview of CAMBODIA Factory

①



CAD plotter machine



Accessories warehouse



Cutting area



Fabric warehouse



Uni-SAF
Work wear | Race wear | Fabric

Overview of CAMBODIA Factory

②



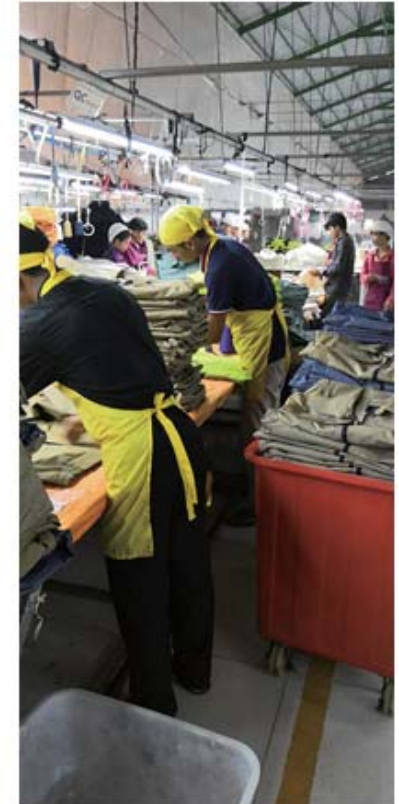
Sewing line



Sewing line aisle



QC inspection



Packaging



Uni-SAF
Work wear | Race wear | Fabric

Overview of CAMBODIA Factory

③



Iron



Iron



Packaging



Needle inspection

Introduction of MYANMAR Factory

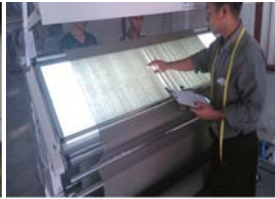


Our joint venture plant in Myanmar was established at the beginning of 2023. It is located in Yangon. It mainly produces padded jackets, winter jackets, down jackets, coats, hoodies and workwear. It has 1300 workers, 15 production lines.

Warehousing



Fabric inspection



Cutting



Sewing



QC inspection



Finishing

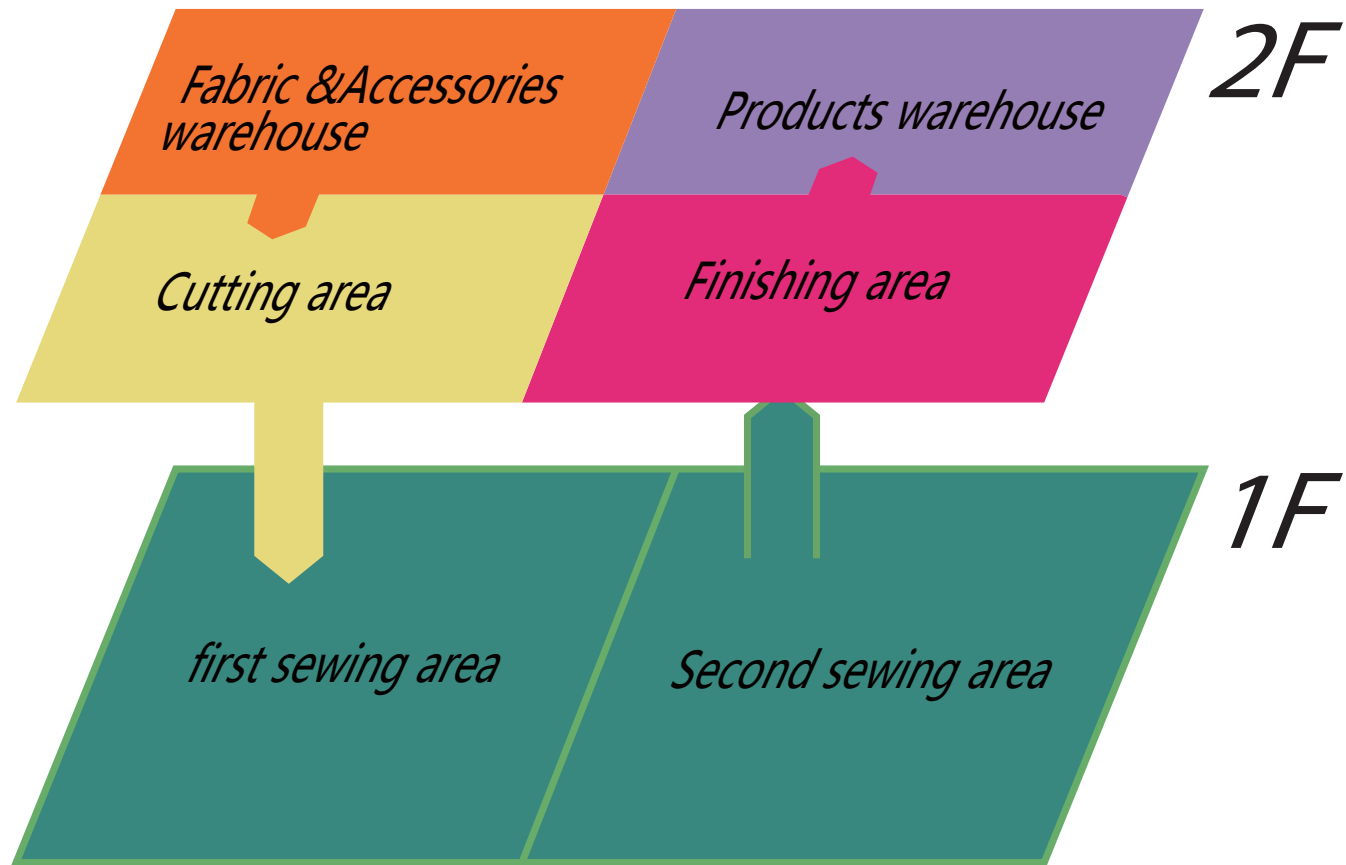


Needle inspection



Uni-SAF
Work wear | Race wear | Fabric

Myanmar factory layout



Equipment of Myanmar factory

Type of Machines	Units
Fabric Inspection Machine	1
Fabric Loosening Machine	1
Straight Knife Cutting Machine	1
Cutting Fabric Knife	6
Needle Detection Machine	4
Knife Sewing Machine	1
Cutting Safety Steel Hand Glove	5
Double Needle Stitching Machine	32
Single Needle Stitching Machine	600
Overlook Sewing Machine	35
Covering Stitch Machine	24
Waistband Chain Stitch	2

Type of Machines	Units
Packaging Machine	2
Rivet Sewing Machine	20
Button Hole Machine	3
Electronic Sewing Machine	3
Eyelet Button Hole	3
Air Compressor Machine	2
Cutting Machine	20
Paly Date Sewing Machine	5
Steaming Iron	25
Steaming Boiler	1
Bag Opening Sewing Machine	2
Automatic quilting Machine	20
Automatic filling/down Machine	20

Overview of Myanmar factory

①



Office area



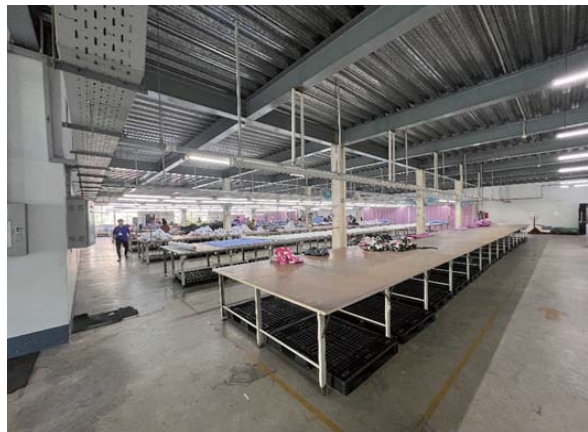
Meeting room



Sample room



CAD plotter machine



Cutting area①



Cutting area②



Uni-SAF
Work wear | Race wear | Fabric

Overview of Myanmar factory

②



Sewing line①



Sewing line②



fabric warehouse



Fabric inspection



QC Inspection area①



QC Inspection area②



Uni-SAF
Work wear | Race wear | Fabric

Overview of Myanmar factory

③



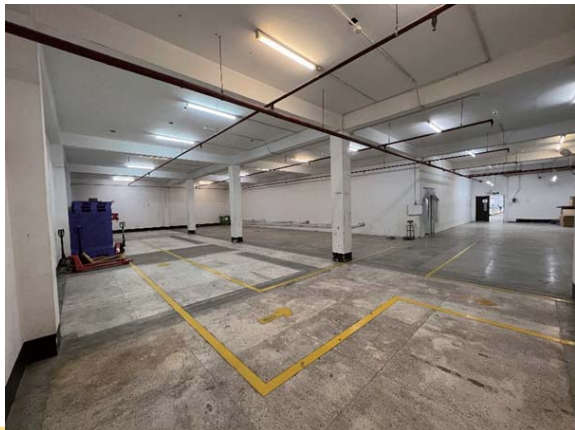
QC Inspection area③



QC Inspection area④



Needle inspection area



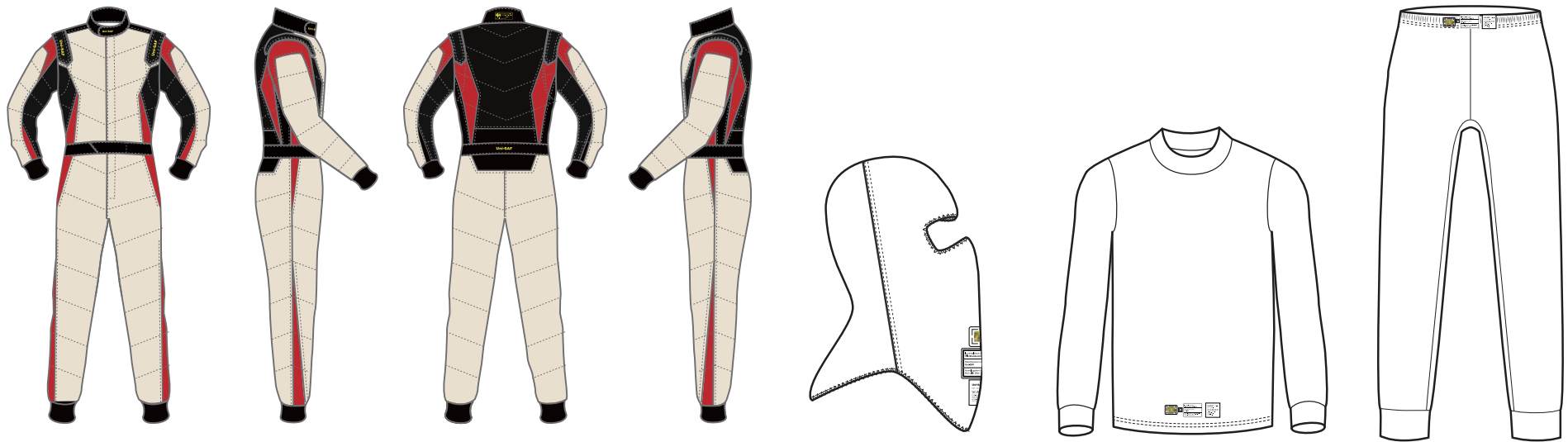
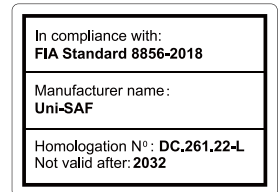
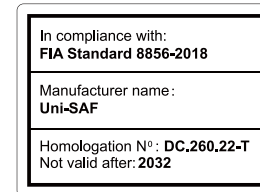
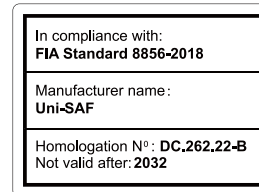
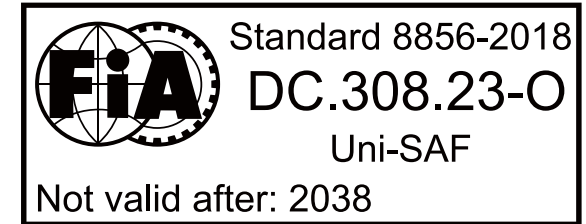
Products warehouse



Uni-SAF
Work wear | Race wear | Fabric

About Racing suit

With more than 10 years of OEM experience in racing suits,
Racing equipment with certifications such as FiA and SFi suitable
for professionals .
We will fully support proposal and manufacturing.



Uni-SAF
Work wear | Race wear | Fabric

Functional workwear



Forest jacket
and trousers



Electrostatic
antiophthalmosis
prevention



Fireproof



C € 0598



Uni-SAF
Work wear | Race wear | Fabric

Products



Uni-SAF
Work wear | Race wear | Fabric

Products



Uni-SAF
Work wear | Race wear | Fabric

Products



Uni-SAF
Work wear | Race wear | Fabric

Products



Uni-SAF
Work wear | Race wear | Fabric

Products



JIAHE

Uni-SAF
Work wear | Race wear | Fabric

Products



sleeping bag